



AT THE FOREFRONT

**UChicago**  
**Medicine**

# The University of Chicago Cardiothoracic Fellowship

Innovative approaches to training  
cardiothoracic surgeons

# Acclaim

- #11 among universities (world)
- #18 among medical schools (US)\*







**UChicago Medicine – Main Campus**



**Christ Advocate – Children's**



**Northshore – Glenbrook Hospital**



**UChicago Medicine – Comer Children's**



**Northshore – Evanston Hospital**



**Northshore – Evanston Hospital**



# Hyde Park



- Located **7** miles from downtown
- Approximately **80,000** residents including Hyde Park, Kenwood and surrounding community
- Approximately **33%** of Hyde Park residents are associated with the University
- Numerous cultural opportunities including, music, theater, museums and ready access to downtown by public transportation.
- Wide variety of housing options within walking distance to hospital.



**811 licensed beds**

**900 attending physicians**

**1085 residents and fellows**

**46 operating rooms**

**34,116 admissions**

**24,497 operations**

**109,671 ER visits**

**\$246.3M NIH funding**



AT THE FOREFRONT

**UChicago Medicine**

# Physical Space – Center for Care and Discovery

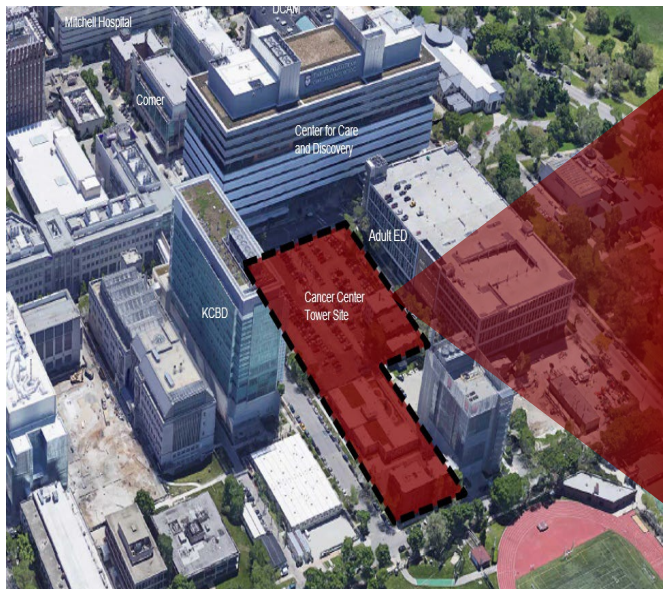


AT THE FOREFRONT

**UChicago** Medicine

# Physical Space – Cancer Center

First Free-standing Cancer Pavilion in Illinois: 575K sq ft



Opening 2027

\$815M





# Program Objectives

- To be a premier multidisciplinary clinical program
- To train future leaders in cardiothoracic surgery
- **To provide the highest standard of surgical care to our patients**



# Program Profile

- Chicago-style surgery: multidisciplinary
  - Evidence-based training
  - Simulation
  - Maclean Center for Clinical Medical Ethics
  - MERITS fellowship in medical education
  - Bucksbaum Institute for Clinical Excellence





Department of  
Surgery



## DEI Steering Committee Leadership



**Peter Angelos, MD, PhD**  
Vice Chair for Ethics, Wellness, and Professional Development



**Chelsea Dorsey, MD**  
Vice-Chair of Diversity, Equity, and Inclusion, Department of Surgery



**Jeffrey Matthews, MD**  
Chair, Department of Surgery



**Julian T. Owens**  
Department of Surgery  
Core Operations  
Manager, Administrative  
Lead for Diversity, Equity, and Inclusion

## Diversity, Equity, and Inclusion

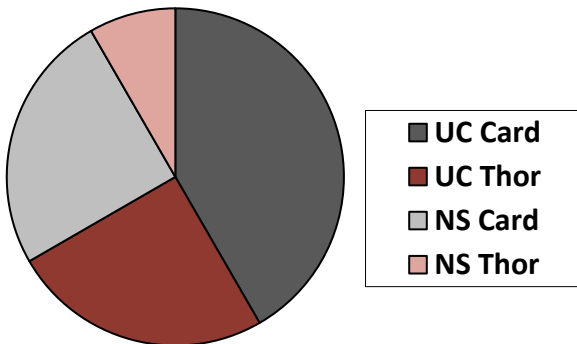
**Mission:** The University of Chicago Department of Surgery Diversity, Equity, and Inclusion (DEI) Steering Committee is committed to addressing and eliminating discrimination in all forms within our department through continuous self-assessment, targeted programming, advocacy, and creation of an increasingly diverse and culturally competent workforce by embedding diversity and inclusion as an integral component of surgical excellence.

In doing so, we aim to remove barriers to healthcare access, to provide the best care for our community, and to create an optimal and equitable environment to work, conduct research, and train.

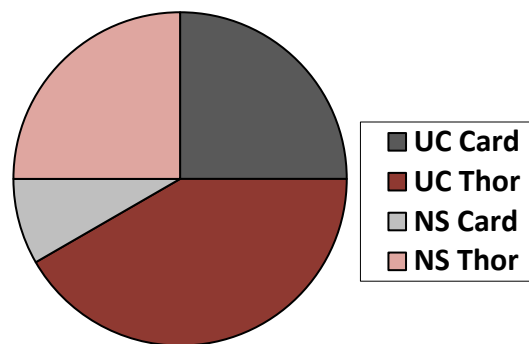
# Pathways

Quarter	Q1	Q2	Q3	Q4	Q1	Q2	Q3	Q4	Q1	Q2	Q3	Q4
Fellow A	UC-T	CPB/ NS-C	CC/ CARD	NS-T	NS-T/ NS-C	UC-C	NS-T	Congenital/ UC-T	UC-C	UC-C	UC-T	UC-T
Fellow B					UC-T	CPB/NS-C	CC/UC-C	NS-T	NS-C	UC-T Congenital	NS-C	UC-C
Fellow C									UC-T	CBP/ NS-C	CC/UC-C	NS-T

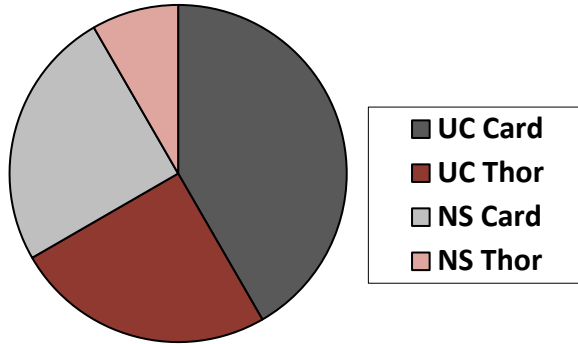
## Cardiac



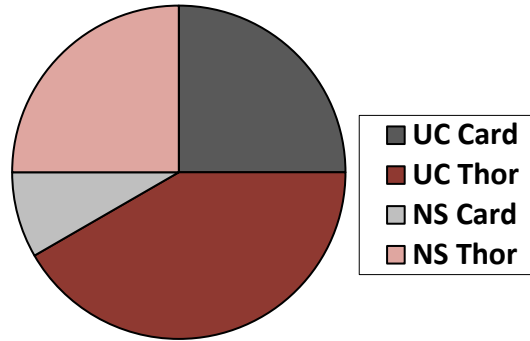
## Thoracic



## Cardiac Track



## Thoracic Track



## Highlights

- Two tracks
- Majority of time at UChicago (~70%)
- Elective time
  - 4mo in year 2
  - 8mo in year 3

	Aug	Sep	Oct	Nov	Dec	Jan	Feb	Mar	Apr	May	Jun	Jul
Year 3 (thoracic)	Elective (Thoracic)						Elective (Ipulm)	Elective (MIS)	Cardiac	Thoracic		
Year 2 (cardiac)	Elective (Cardiac)					Congenital	Thoracic				Cardiac	
Year 1 (cardiac)	Thoracic		Cardiac				CTICU	Cardiac		Thoracic		



## Other Specialty Experience Options

- Arrhythmia intervention
- Echocardiography
- PFT lab
- EUS/EBUS
- Esophageal function lab
- Endovascular therapies
- Cath lab
- Foregut rotations

# Institutional Resources

Resource	U of C	NorthShore	Total
Beds	568 (+80)	389	957
ORs	44	12	54
CVT ORs	7	1.5	7.5
CVT floor beds	55	34	89
CT ICU beds	28	26	54
PA/NP	>20	6	30
Outpatient clinic days/week	5	2	5
Educational support staff	1	1	2.5

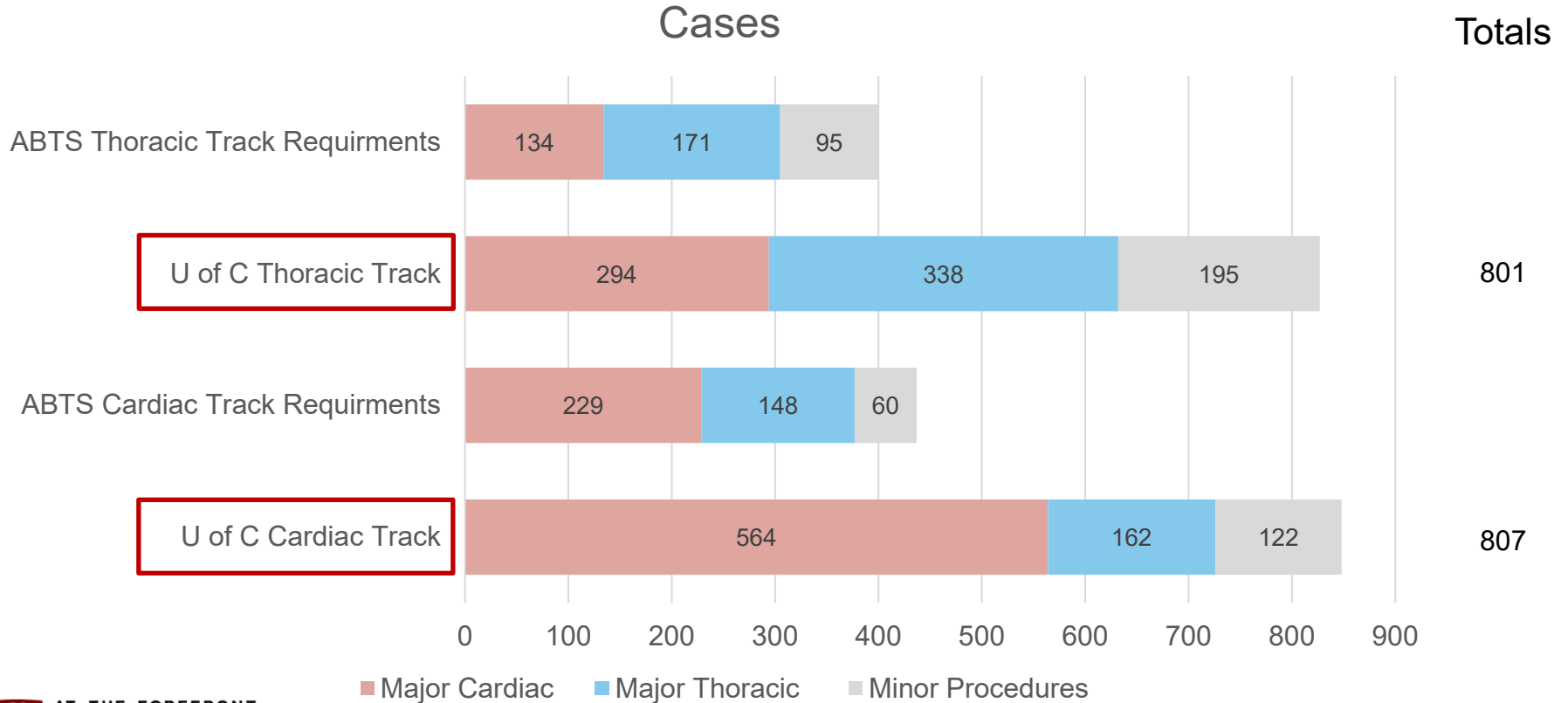


# Annual Hospital Volume

	U of C	NorthShore	Total
Pulmonary/pleural	212	197	409
Esophagus	25	19	44
Other major	75	14	89
CABG	163	86	249
Valve	180	73	253
Congenital	100	3	103
Transplant	97	0	97
Other major	189	77	166
<b>TOTAL MAJOR</b>	<b>1062</b>	<b>483</b>	<b>1545</b>
Minor	418	258	676
<b>TOTAL</b>	<b>1480</b>	<b>742</b>	<b>2221</b>



# Resident Case Volume 2017-2023





# Educational Approaches

- Curricular design
  - Topic related learning objectives
  - Thoracic web of knowledge – TSDA
  - Structured didactics
  - Simulation
  - Board question review (SESATS)
  - Mock orals
  - Key feature scenarios
- The unexamined case is not worth doing

Conference	Frequency
Core curriculum	Tuesdays
CT Morbidity and Mortality	Monthly
Mock Orals	Wednesdays
Board Review Session/KF scenarios	Thursdays
UCMC Thoracic Case Conference	Weekly
UCMC Attending Ward Rounds	Daily
City-wide Joint Journal club	Quarterly
UCMC Adult Cardiac Conference	Weekly
UCMC Pediatric Cardiac Conference	Weekly
UCMC Heart Transplant Conference	Weekly
UCMC Thoracic Malignancies Staging Conferences	Weekly
NSUH Cardiac Catheter Conference	Weekly
NSUH Thoracic Oncology Conference	Weekly

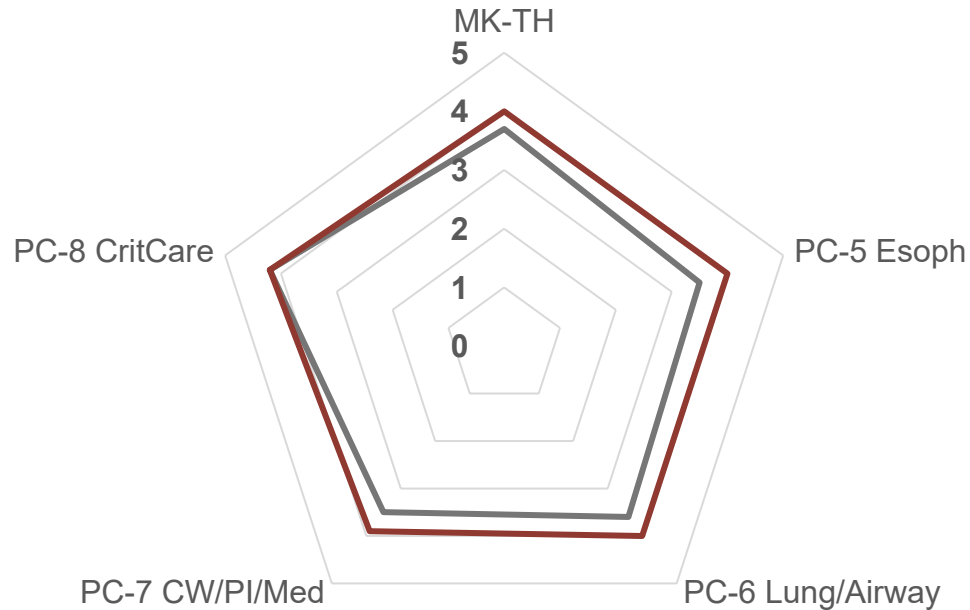
# Other Educational Opportunities

- TSDA Boot Camp
- Education training
  - RIME (Research in Medical Education monthly lunch conferences)
  - MERITS (Medical Education Research Innovation and Teaching Scholarship—2-year scholarly track)
- Society meetings
- City-wide journal club
- City-wide mock orals
- Industry-funded courses

# Unique Educational Opportunities

- Skinner lecture
- Benfield lecture
- Fry lecture
  
- Scholarship – clinical research, reviews, curriculum development
- Research – basic/translational, outcomes, modeling, education, simulation

# Competencies – Thoracic Medical Knowledge & Patient Care



## Relevant factors

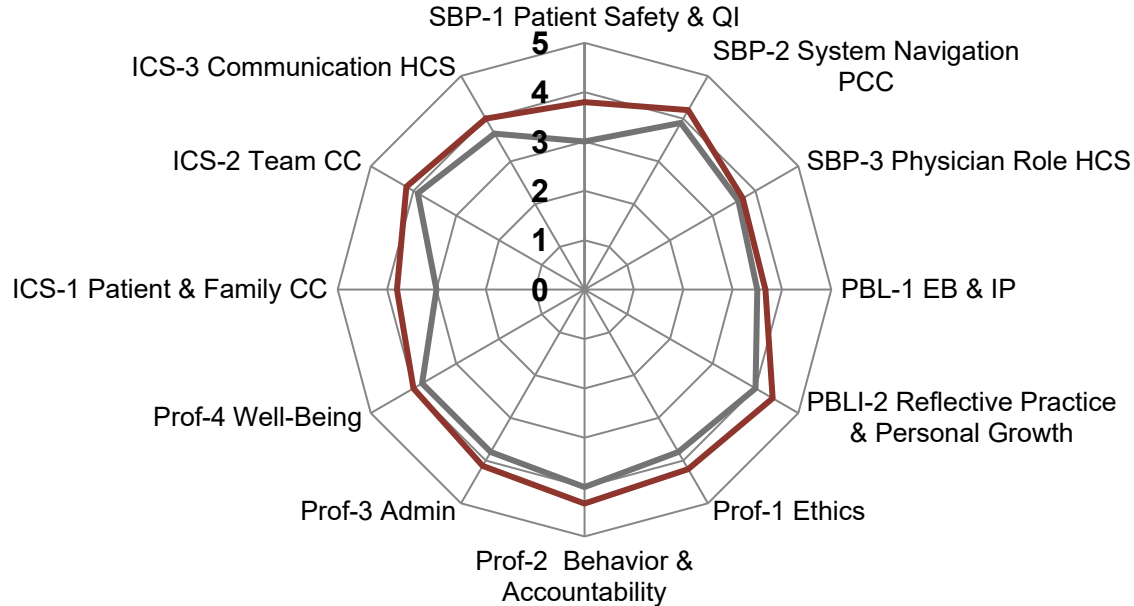
### Medical Knowledge:

- In-training exam
- Structured case discussions
- Simulation
- Evaluation of rotations
- Core curriculum presentations

### Patient Care:

- Direct observation
- Structured case discussions
- Simulation
- Review sign-offs
- STAT

# Competencies – Nonclinical Attributes



## Relevant Factors:

### Professionalism

- Direct observation
- Multi-source assessment
- Simulation
- Chart review

### Practice-based learning and improvement

- Case logs
- Teaching
- Pt outcomes
- Presentations

### Interpersonal and communication skills

- Direct observation
- Chart review
- Mock orals
- Simulation
- Multi-source assess

### Systems Based Practice

- Direct observation
- Multi-source assessment
- Mock orals

# Education and On-Call Responsibilities

- No in-house call
- APPs and other team members manage routine issues that arise at night and on weekends
- Night duties should be part of the curriculum rather than being a service function
- Transplant call rotations coming in when needed



# Heart Failure Program

- Transplantation
- Devices as bridge to transplant
- Devices as destination therapy
- Multiple device studies
- Large support staff



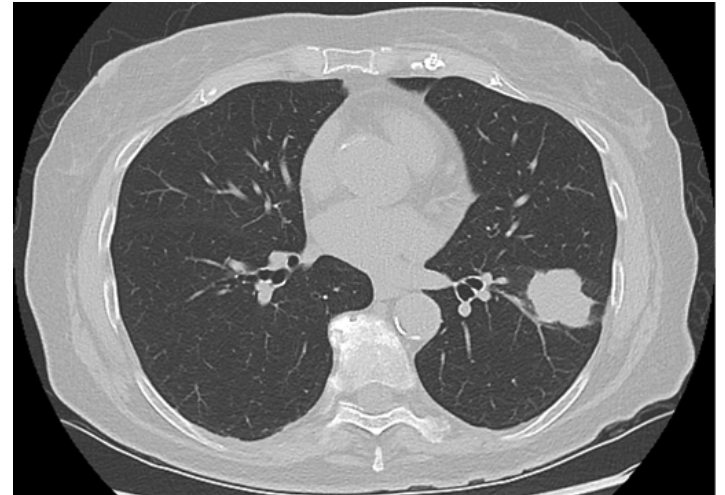
# Lung Failure Program

- Transplantation
- Pulmonary hypertension
- LVRS
- Multiple clinical studies
- Large support staff



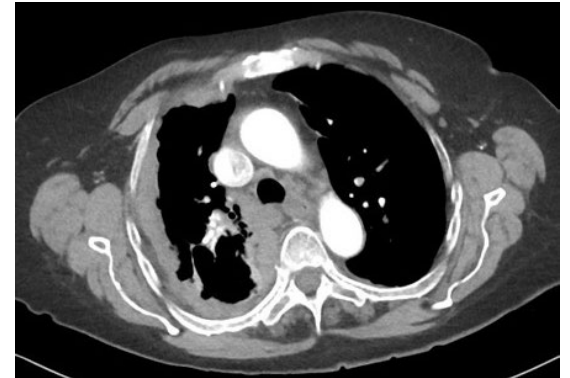
# Chest Oncology Program

- Cooperative interdisciplinary group since 1973
- Advanced diagnostics and therapeutics in every aspect
  - Medical and radiation oncology, surgery, interventional pulmonary medicine, radiology, interventional endoscopy, pathology, cytology
  - Tissue bank
  - Multiple treatment research protocols



# Mesothelioma Program

- Cooperative interdisciplinary group for 25 years
- Advanced diagnostics and therapeutics in every aspect
  - Medical and radiation oncology, surgery, palliative care medicine, radiology, pathology, cytology
  - Tissue bank
  - Multiple unique treatment research protocols



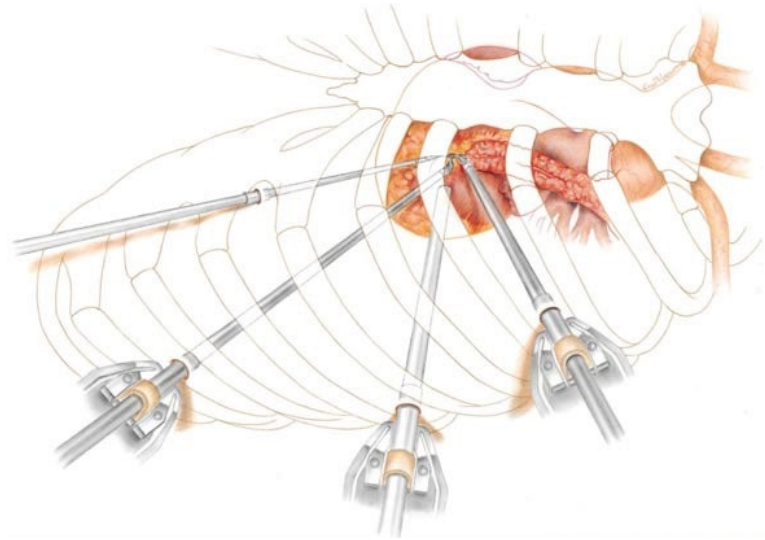
# Airway Program

- Multidisciplinary group
  - Thoracic
  - ENT
  - Interventional pulmonary
- Expertise in every aspect, including endoscopic and resectional therapy



# MIS and CT Surgery

- Valve repair/replacement
- CABG
- Ablation
- RATS
- RAMIE



# Robotic Cardiac Program

- Leader in tricuspid repair
- Many firsts
- Only program in the world to do totally robotic multivessel CABG
- 1685 total robotic cardiac cases
  - 200 in 2023



# Simulation Curriculum

- Cardiac anatomy
- Airway management
- Interventional bronchoscopy
- CPB
- Vessel anastomosis
- AVR
- Mechanical support (acute, chronic)
- Basic robotic skills
- Cadaver labs





# Cardiovascular Faculty



**Val  
Jeevandum**  
Columbia  
Columbia



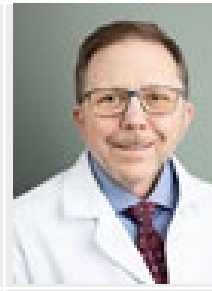
**Husam  
Bahlkey**  
Tufts  
Tufts



**David  
Onsanger**  
Med Coll  
Wisconsin  
U Wisconsin



**Takeyoshi  
Ota**  
Kobe U  
Kobe U  
U Pittsburgh



**Christopher  
Salerno**  
U Minnesota  
Stanford



**Hyde  
Russell**  
U Chicago  
Northwestern



**Luca  
Vricella**  
GWU  
Stanford



**Narutoshi  
Hibino**  
Ehime U  
TokyoWomen

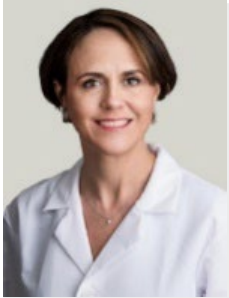


**Jonathan  
Somers**  
Brown  
Rush

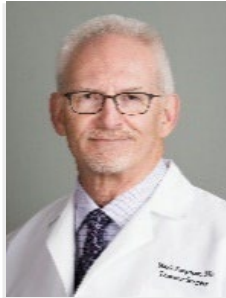


**Nikola  
Dobrilovic**  
Jewish  
Hospital  
UTSW

# Thoracic Faculty



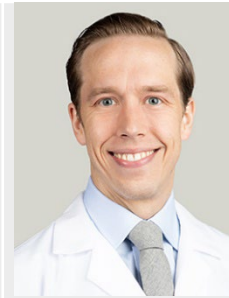
**Jessica  
Donington**  
Georgetown  
Mayo



**Mark  
Ferguson**  
U Chicago  
U Chicago



**Lucia  
Madariaga**  
MGH  
MGH



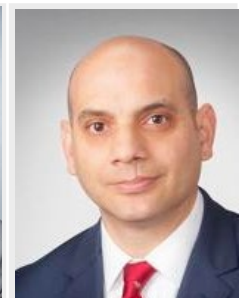
**Darren  
Bryan**  
U Chicago  
Brigham



**Seth Krantz**  
Northwestern  
Wash U



**Weilen Su**  
Indiana U  
U Pittsburgh



**Pablo  
Sanchez**  
Argentina  
Brazil  
U Pittsburgh

# Research Initiatives

- Translational
- Clinical
- Outcomes
- Education and training



The Society  
of Thoracic  
Surgeons



# Residents

Name	Year	Medical School	Residency	Current position	Specialty
Trevor Williams, MD, MPH	2015	McGill University	UCSF East Bay	Private practice, CA	Thor
Zewditu Asfaw, MD	2016	Wake Forest University	Wayne State	Private practice, MI	Card
Diego Avella, MD	2017	Columbia	Penn State	Northwestern	Thor
Brian Mitzman, MD	2018	SUNY Buffalo	Lenox Hill	University of Utah	Thor
Jamie Eridon, MD	2019	UCSD	Lenox Hill	Private practice, CA	Card
Andrew Brownlee, MD	2020	University College Dublin	Lenox Hill	Cedars Sinai	Thor
Miroslav Peev, MD	2022	Koln, Germany	NYU	Private practice, WI	Card
Philip Erwin, DO	2023	W VA Sch of Osteo Med	U South Carolina	U South Carolina	Thor
Favin Babu, MD	2024	University of Illinois	Loyola University		Thor
Ahmed Hozain, MD	2025	Michigan State	SUNY Brooklyn		Card
Steven Qi, MD	2026	Tufts	U of Minnesota		Card
Matthew Wheelwright	2007	U of Minnesota	U of Minnesota		Card

# Recent Resident Educational Activities

- TSRA Travel Award
- Intuitive Fellowship Award
- TSDA Bootcamp
- CT Critical Care Conference
- Thoracic Journal Club
- ACS Thoracic Workgroup
- AATS poster competition
- CTSNet resident video prize



**"Top Gun" Finalists- 2017**

 <p>Fuyuki Hirashima, MD Montefiore Medical Center</p>	 <p>Craig M. Jarrett, MD, MBA Brigham and Women's Hospital</p>
 <p>Brian Mitzman, MD University of Chicago</p>	 <p>Janet Ngu, MD, MSc University of Ottawa Heart Institute</p>
 <p>Fabio Sagebin, MD University of Rochester</p>	

 The Society of Thoracic Surgeons

 TSDA THORACIC SURGERY DIRECTORS ASSOCIATION

# What's new?

- 2023
  - Staffing Ingalls Hospital
  - Purchase of AdventHealth System
  - Outpt clinics River East, Flossmoor
- 2024
  - New hires in cardiac and thoracic
  - Outpatient facility in northwest Indiana
  - New location for NS cardiac program
  - New PD
- 2027
  - Free standing Cancer Center Hyde Park on campus



# Leisure Time

## Chicago – my kind of town!

- Midwestern ambience, accessibility
- East coast / west coast amenities
- Theater, music festivals, restaurants, sports, outdoor activities

## On Campus

- Ratner Center (gym)
- Doc Films (\$5 movies)
- Smart Museum of Art
- Oriental Museum
- Court Theatre
- Cafés and bookstores









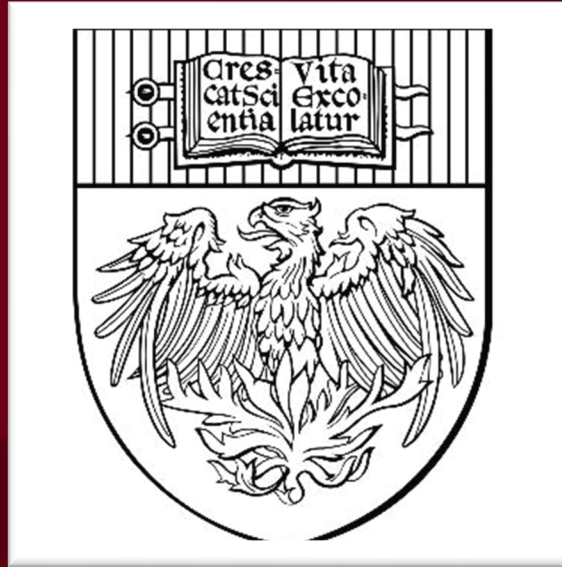




tomrossiter



“Crescat scientia; vita excolatur”



“Let knowledge grow from more to more;  
and so be human life enriched”

